

Turn **sunshine**
into profits for your building.



designed to be better.™

PV supports from Legrand are designed to keep roofs **safe** and install **fast**.

PV panel supports with ballast on asphalt and gravel roof



Delta Strut attached to standing seam roof



PV panel supports with ballast on sandy soil



Stanchion mounted Delta Strut on membrane roof

Revolutionary **components** that combine for a **superior** rooftop PV support system.

Our Systems Meet UL 2703 Bonding Requirements.

Look to Legrand for the PV support that fits your roof. Legrand designed its **Delta Strut™** and **USS support system** to be lightweight and easy to install on **sensitive roofs**, yet strong enough to withstand extreme snow and wind loads. These components and others can be combined for a **custom PV support** for your roof – **Legrand has a solution for you.**

Ballast System PV support for built-up or membrane roofs



EFFORTLESS PV PANEL ATTACHMENT

Panels attach quickly and easily with threaded clamps. The middle clamp is spring loaded to stay in place while PV panels are easily positioned and secured.

INTEGRATED CABLE MANAGEMENT

Delta Strut combines a PV panel strut and a cable management system into one structure, keeping cables close to the panels and protected from UV exposure.

REVOLUTIONARY STRUT DESIGN

Delta Strut's welded wire construction is designed to handle extreme static and wind loads up to 140 mph. Its open design further reduces wind loads.

MICRO-INVERTER MOUNTING

Micro-inverters can be mounted directly to Delta Strut, beneath the PV panels and protected from weather.

EASY TO ASSEMBLE

Angle supports feature built-in positioning tabs, predrilled mounting holes and other design features to reduce critical-fit complexity for faster installation.

STEEL IS BETTER THAN ALUMINUM

Legrand solar supports are made of high grade, hot dipped galvanized steel that is more dimensionally stable than aluminum.

INTEGRATED BALLAST PLACEMENT

Ballast placement is built right in to the angle support with no additional hardware needed. Additional ballast stones can be added for high wind locations.

ANGLE SUPPORTS FOR ANY LATITUDE

Patent-pending USS angle supports are available in 10°, 20° and 30° options with versions that adjust to uneven surfaces.

PV supports designed to **adapt** to **any** mounting method or roof type.

PV supports for metal standing seam roofs

EFFORTLESS PV PANEL ATTACHMENT

Panels attach quickly and easily with threaded clamps. The middle clamp is spring loaded to stay in place while PV panels are easily positioned and secured.

REVOLUTIONARY STRUT DESIGN

Delta Strut's welded wire construction is designed to handle extreme static and wind loads up to 140 mph. Its open design further reduces wind loads.

INTEGRATED CABLE MANAGEMENT

Delta Strut combines a PV panel strut and a cable management system into one structure, keeping cables close to the panels and protected from UV exposure.

STEEL IS BETTER THAN ALUMINUM

Legrand solar supports are made of high grade, hot dipped galvanized steel that is more dimensionally stable than aluminum.

SECURE ATTACHMENT TO METAL ROOFS

Standing seam roof clamp secures Delta Strut to standing seam roofs.

Stanchion support with Delta Strut PV support for built-up or membrane roofs

EFFORTLESS PV PANEL ATTACHMENT

Panels attach quickly and easily with threaded clamps. The middle clamp is spring loaded to stay in place while PV panels are easily positioned and secured.

REVOLUTIONARY STRUT DESIGN

Delta Strut's welded wire construction is designed to handle extreme static and wind loads up to 140 mph. Its open design further reduces wind loads.

INTEGRATED CABLE MANAGEMENT

Delta Strut combines a PV panel strut and a cable management system into one structure, keeping cables close to the panels and protected from UV exposure.

ANGLE SUPPORTS FOR ANY LATITUDE

Angle supports are available in 10°, 20° and 30° to suit any building location or roof angle.

STEEL IS BETTER THAN ALUMINUM

Legrand solar supports are made of high grade, hot dipped galvanized steel that is more dimensionally stable than aluminum.

Legrand rooftop supports are designed for **easy installation** to reduce overall costs.



View the Delta Strut™ video using your mobile device

1 Position Universal Solar Supports:
Place the USS supports according to your specific layout. Supports are shipped ready to install.



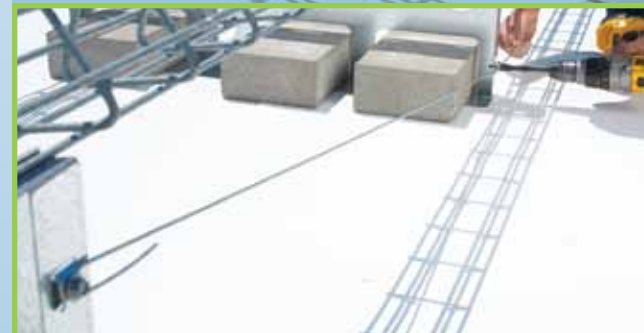
2 Install Ballast Blocks:
Place ballast blocks within the openings in the USS base - no additional hardware is needed to secure them. Additional ballast can be added as needed for high wind locations.



3 Place Sections of Delta Strut:
Built-in positioning tabs eliminates critical-fit positioning of Delta Strut. Secure Delta Strut to USS with self-threading screws.



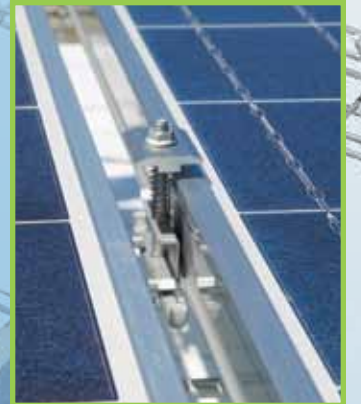
4 Attach Cable Bracing:
Attach cable bracing as needed on back of support. Predrilled holes make for quick attachment.



5 Cable Management:
The open design of Delta Strut creates a natural cable pathway. Lay in any cabling before mounting PV panels.



6 Mounting PV Panels:
Panels attach quickly and easily with threaded clamps. Middle clamp is spring loaded to stay in place while panels are easily positioned and secured.



Delta Strut™ Typical Installation



Use this example as a guide only. Legrand will help you with a custom solution to suit your specific needs.

How to Order

Use our online quoting tool to find out how much you can save using Delta Strut today!
www.Legrand.us/solarrrfq



SPECIFICATIONS

Wind Speed	100 mph
Snow Load	20 lbs./sq. ft.
Panel Type	Typical 250W (39.1 x 65 x 1.57)
Tilt Angle	10 degrees
Roof Type	Membrane
Support Spacing	60 inch OC MAX
Panel Orientation	Portrait
Panel Count	64

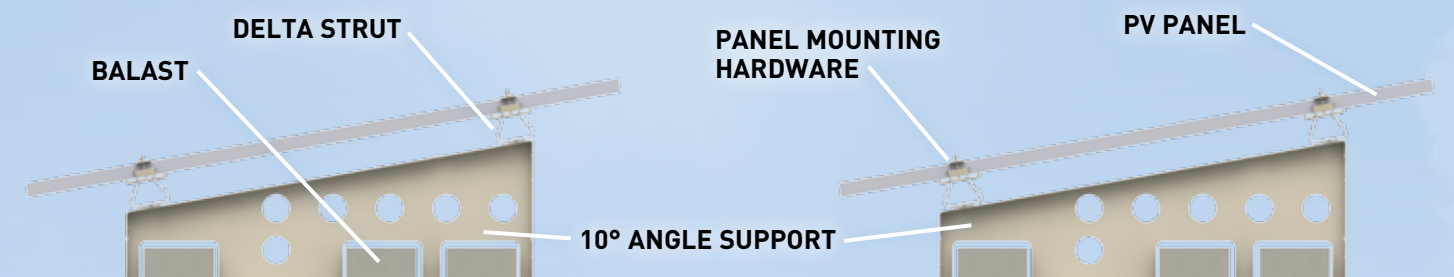
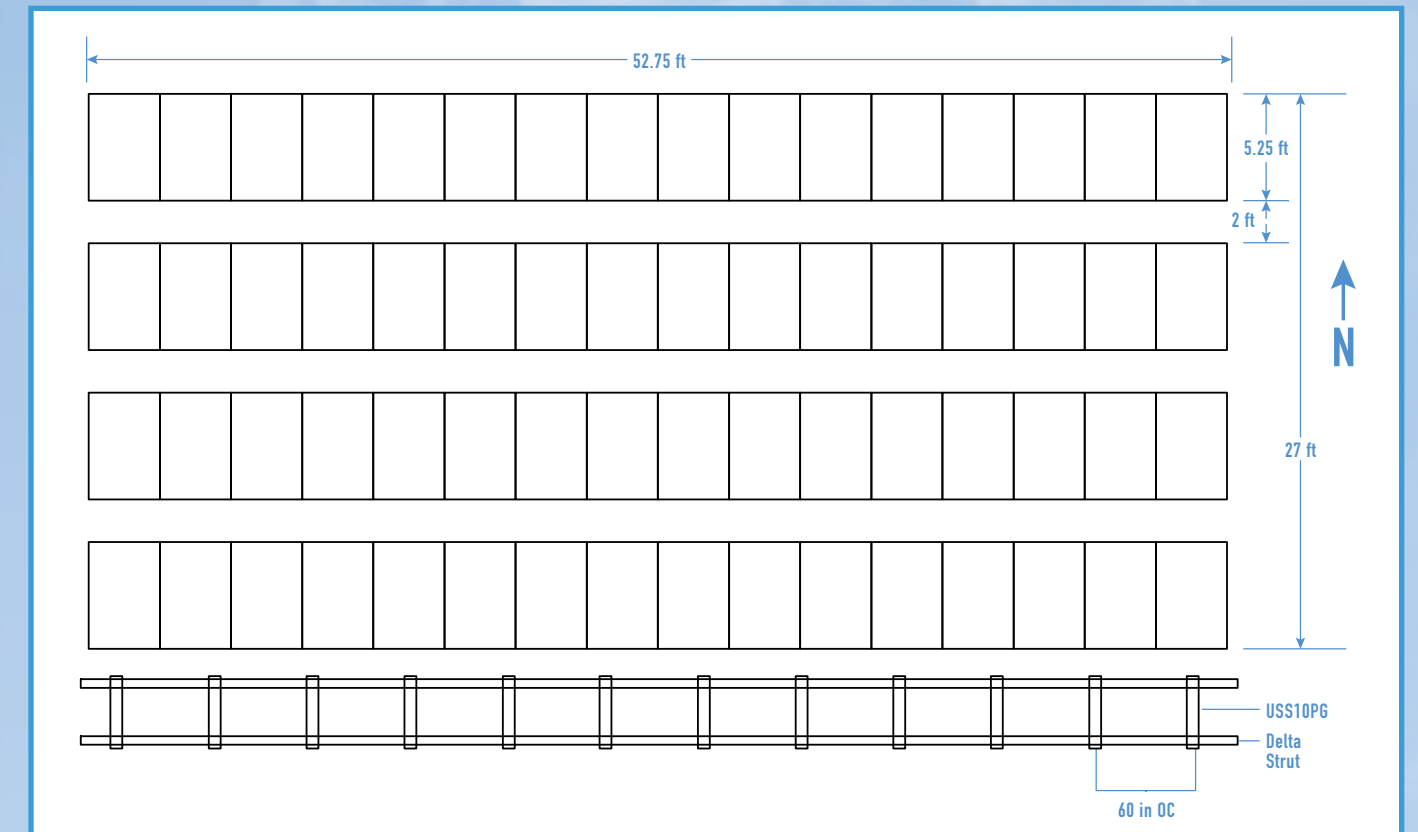


BILL OF MATERIALS

	Description	Qty.
P850001	DELTA STRUT GC Delta Strut 10 ft L -Hot Dipped	44
P850315	USS10PG Universal Solar Adjustable Support 10° -PG	48
P850210	DSPCCBR14A Delta Strut Connection Clamp -DC	96
P850173	DSSADC Delta Strut Splice Assembly (Bag of 10) -DC	4
P850046	DSMHDC30TADC Delta Strut Middle Hold Down clip assembly -DC	120
P850051	DSEHDC30TADC Delta Strut End Hold Down Clip Assembly -DC	16
P850323	DSLBRKIT Delta Strut Lateral Bracing Rope Kit	1



TYPICAL DELTA STRUT INSTALLATION





Legrand is the world specialist in electrical products and systems for use in residential, commercial and industrial buildings. In 2011 we instituted an environmental management system bringing our practices in accordance with ISO 14001 and to reduce our energy intensity across our factories, warehouses and offices as a Partner to the President's Better Buildings, Better Plants Challenge.

designed to be better.™



www.legrand.us/cablofil

Phone 800-658-4641

618-566-3230

Fax 618-566-3250

8319 State Route 4

Mascoutah, IL 62258 USA